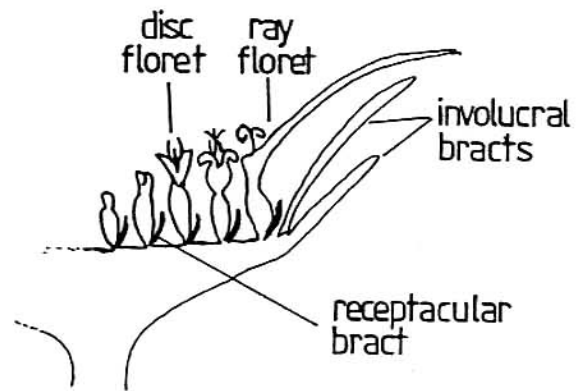


COMPOSITAE (= ASTERACEAE)

The Daisy Family

The Composites constitute one of the largest flowering plant families. Lettuce, sunflower, chrysanthemum, Zinnia are all Composites. The leaves are alternate or opposite, simple or dissected and without stipules. The family is characterised by the head-like inflorescence (capitulum) comprising many small flowers (florets) surrounded by an involucre of bracts. The individual florets are bisexual, unisexual or sterile. The calyx is absent while the corolla is in the form of a 4 or 5 lobed tube or ligulate (strap-shaped). There are several types of florets and the type of florets present as well as their arrangement means that there are several distinct head constructions each with a precise name (radiate, discoid etc.).



Emilia coccinea      Cupid's Paint brush

A composite with discoid heads.