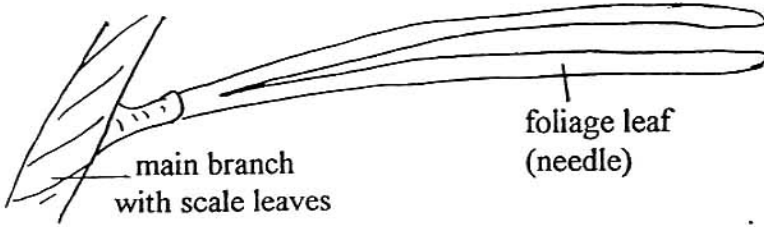


Pinus caribea - The Caribbean Pine

SPOROPHYTE GENERATION

This tree is found in several Caribbean islands. The pine tree with its cones is the sporophyte generation.

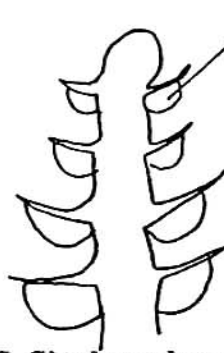
the short shoot - a branch of limited growth



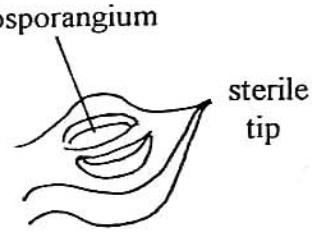
a group of male strobili or cones



microspore

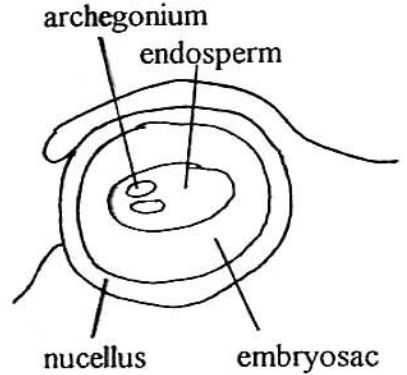
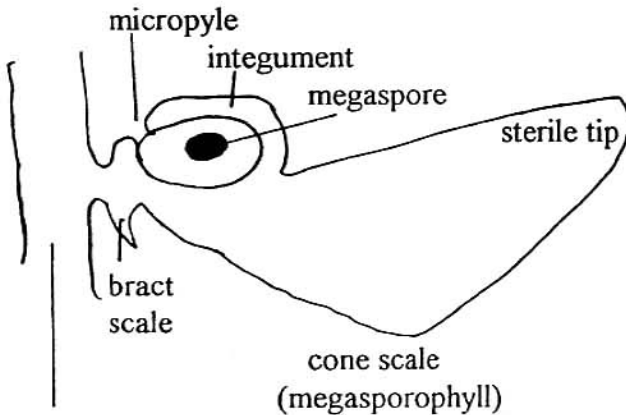


L.S. Single male cone



microsporangium

The female strobilus of megasporophylls which we commonly call the "cone" is thus one of two types produced by the sporophyte.



L.S. Part of female cone

The mature seed is released from the megasporophyll together with a thin layer of papery tissue which was the upper surface of the megasporophyll. This tissue forms a wing, aiding in seed dispersal.

The microspores or pollen grains dispersed from the male cone are windborne. Within each pollen grain is a minute male gametophyte.